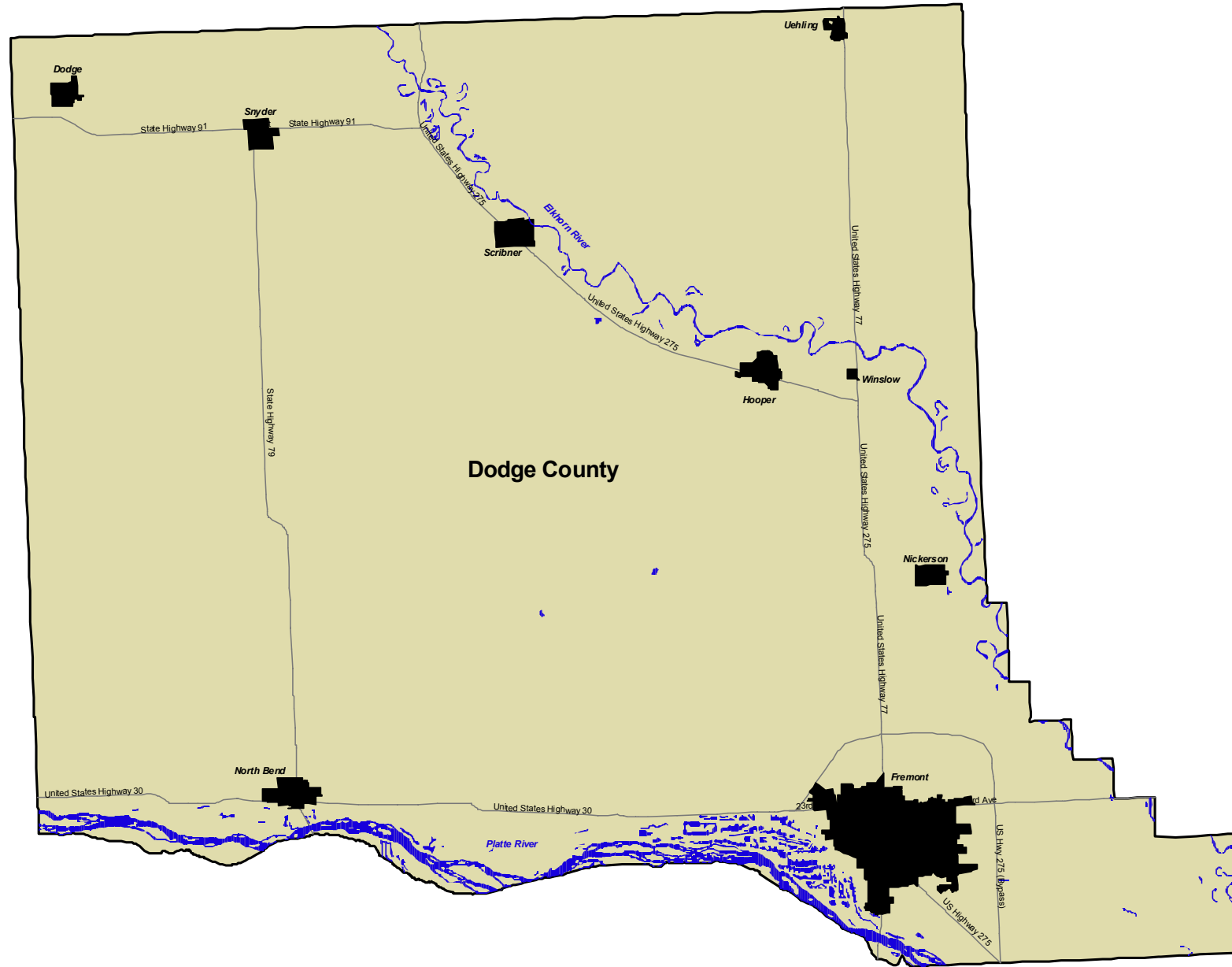
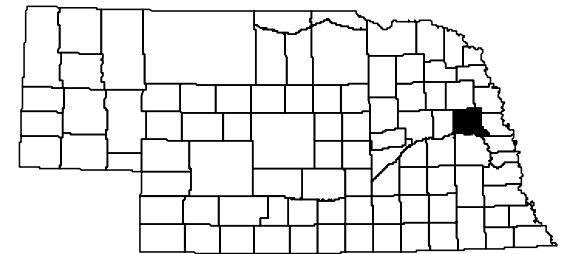


Legislative District 15 - LB 852 (2001)



Index Map



District 15 Statistics

	Total Population	Percent Population	Voting Age	Percent Voting Age
White	34,110	94.33	25,960	95.31
Black	145	0.40	99	0.36
Hispanic	1,421	3.93	872	3.20
Native Amer.	84	0.23	56	0.21
Asian	178	0.49	127	0.47
Pacific Islndr	22	0.06	22	0.08
Other	10	0.03	5	0.02
Multiple races	190	0.53	97	0.36
TOTAL	36,160	100.00	27,238	100.00
	Population deviation	1,236		
	Percent deviation	3.54		

Symbols

- County Boundary
- Roads, Highways, and Interstates
- Legislative District
- City or Village

Sources

- LB 852 (2001)
- U.S. Bureau of the Census, PL94-171 (Population data), 2000
- U.S. Bureau of the Census, TIGER/Line files, 2000

